

Urostomy / Ileal Conduit

The word stoma means opening.

The surgeon and stoma nurse will explain about the medical condition that your child has, and the reasons why an operation is necessary to divert the urine made in the kidneys away from the bladder by an operation called a urostomy or ileal conduit.

The length of time your child will need a stoma varies according to your child's condition and the surgeon's plan of care.

Diagram of urinary tract

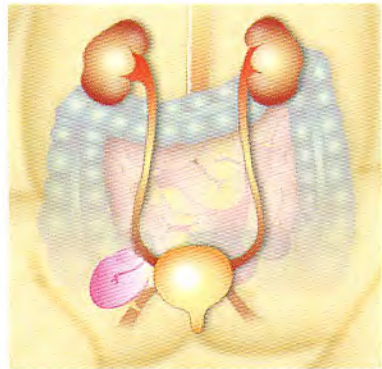
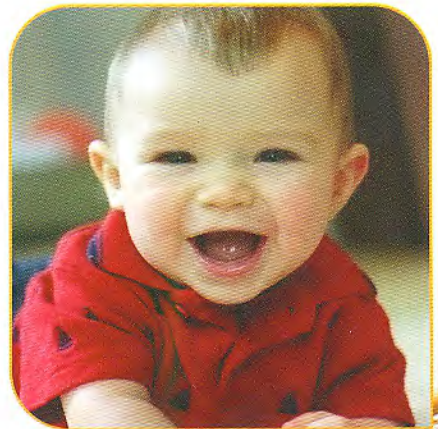
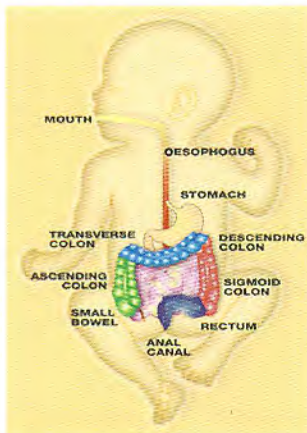


Diagram of the alimentary tract



Urostomy / Ileal Conduit

Urostomy / Ileal Conduit

This type of stoma is made to divert the flow of wee away from the bladder. The surgeon makes the stoma by detaching the ureter (tubes) from the bladder and joining them to a short piece of small bowel (ileum). One end of the piece of small bowel is closed off and the other end is brought onto the child's tummy to form a stoma. The stoma is a pink/ red colour similar to the inside of your mouth and when the stoma is touched it does not hurt. The wee drains into a bag at any time day or night. This is usually a permanent type of stoma.

Diagram of a Urostomy / Ileal Conduit

